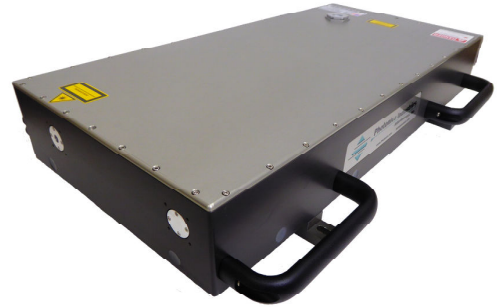




# NX Variable Pulse Width Nanosecond Lasers

## Features

- ❖ Up to 100W of power at 1064nm
- ❖ Variable Pulse Width from 5ns to 50ns
- ❖ Repetition rate from Single Shot to 8MHz
- ❖ Excellent beam quality ( $M^2 < 1.3$ )
- ❖ Closed loop chilled
- ❖ Small compact all-in-one form factor
- ❖ Diode pumped technology
- ❖ Harmonic options available (i.e., 532 & 355nm)



## System Specifications @ 1064nm

Model Number	NX-1064-50	NX-1064-70	NX-1064-100
Average Power (@ 1MHz, 7 to 8ns)	50W	70W	100W
Pulse width (nominal)		variable from 5ns to 50ns	
Pulse Energy		1.5mJ @ 10kHz	
Repetition Rate		Single Shot to 8MHz	
Spatial Mode		TEM <sub>00</sub> M <sup>2</sup> <1.3	
Output Beam Diameter		~1mm (Nominal)	
Beam divergence		<3 mrad	
Beam Point Stability		<50 urad	
Ambient Temperature	15°C to 30°C (59° to 86°F) Operating Range		
Relative Humidity	Non-condensing, 90% Max		
Cooling	Closed Loop Chiller		
Laser Head Dimensions	10" (W) x 3.75" (H) x 24" (D)	12" (W) x 3.75" (H) x 24" (D)	

## System Specifications @ 532nm

Model Number	NX-532-25	NX-532-35	NX-532-50
Average Power (@ 1MHz, 7 to 8ns)	25W	35W	50W
Pulse width (nominal)		variable from 5ns to 50ns	
Pulse Energy		750uJ @ 10kHz	
Repetition Rate		Single Shot to 8MHz	
Spatial Mode		TEM <sub>00</sub> M <sup>2</sup> <1.3	
Output Beam Diameter		~1mm (Nominal)	
Beam divergence		<3 mrad	
Beam Point Stability		<50 urad	
Ambient Temperature	15°C to 30°C (59° to 86°F) Operating Range		
Relative Humidity	Non-condensing, 90% Max		
Cooling	Closed Loop Chiller		
Laser Head Dimensions	10" (W) x 3.75" (H) x 24" (D)	12" (W) x 3.75" (H) x 24" (D)	

## System Specifications @ 355nm

Model Number	NX-355-10	NX-355-14	NX-355-20
Average Power (@ 1MHz, 7 to 8ns)	10W	14W	20W
Pulse width (nominal)		variable from 5ns to 50ns	
Pulse Energy		300uJ @ 10kHz	
Repetition Rate		Single Shot to 8MHz	
Spatial Mode		TEM <sub>00</sub> M <sup>2</sup> <1.3	
Output Beam Diameter		~1mm (Nominal)	
Beam divergence		<3 mrad	
Beam Point Stability		<50 urad	
Ambient Temperature	15°C to 30°C (59° to 86°F) Operating Range		
Relative Humidity	Non-condensing, 90% Max		
Cooling	Closed Loop Chiller		
Laser Head Dimensions	10" (W) x 3.75" (H) x 24" (D)	12" (W) x 3.75" (H) x 24" (D)	

1800 Ocean Ave. Ronkonkoma, NY USA 11779

E-Mail: [info@photonix.com](mailto:info@photonix.com)

Phone: 631-218-2240

Website: [www.photonix.com](http://www.photonix.com)

Fax: 631-218-2275

Due to Photonics Industries' commitment to continuous product improvement, specifications and drawings are subject to change without notice.

Photonics Industries conforms to provisions of US 21 CFR 1040.10 & 1040.11 and is made under one or more US patents listed below: 9,882,335, 9,531,147, 8,817,831, 7,869,471, 7,346,092, 7,082,149, 7,079,557, 6,999,483, 6,980,574, 6,961,355, 6,842,293, 6,762,405, 6,587,487, 6,584,134, 6,366,596, 6,356,578, 6,327,281, 6,246,707, 6,229,829, 6,108,356, 6,061,370, 6,028,620, 5,936,983, 5,898,717 and Pending Patents



**Photonics Industries**  
International, Inc.

Copyright © 2019 by Photonics Industries International, Inc.