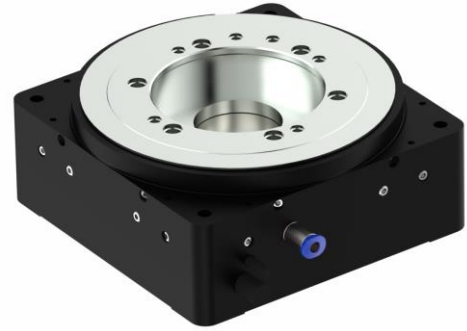


## Key Features

- Air Bearing Rotary Table with Direct Drive
- Compact Design 115x115x49/60 mm
- Radial Runout < 0,2 µm
- 1000 U/min in Standard Version
- 1 Vss or with Interpolation (5x, 10x, 50x, 100x)



## Rotary Table EZ-0675 / EZ-0675 HT

### Design and Construction

With its basic dimensions of 115 x 115 mm, the EZ-0675 is a very compact air bearing rotary table. The EZ-0675 is particularly suitable for precise positioning tasks in measuring machines or, mounted on linear axes, for aligning components or optical devices when being placed on linear axes. The turntable can be screwed on from above or below via four through holes with M6 and M4 threads.

The integrated measuring system (Numerik RIK4) with 10,000 lines can be supplied either with interpolation (RS422 in 5, 10, 50 or 100-fold) or without (1Vss).

Alternatively, the rotary table is also available as HT (High Torque) version. With the HT version, the overall height increases from 49 mm to 60 mm.

Due to the magnetic preload, the EZ-0675 is self-locking when the supply air is turned off. It can be installed horizontally and vertically in any orientation.

The materials used and the absence of lubricants qualify the rotary table for operation in clean room environments.

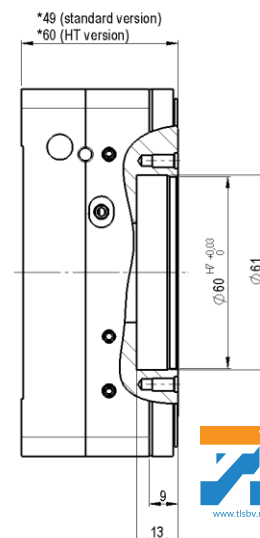
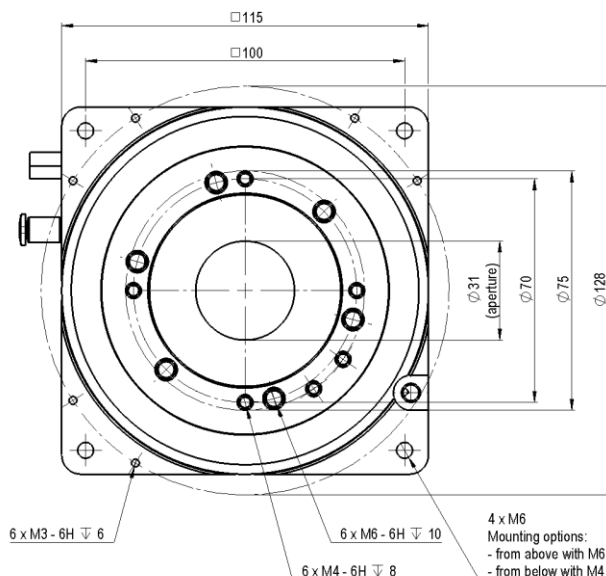
### Applications

High-precision positioning and measuring systems, inspection technology, testing systems, calibration systems, optical alignment, applications with high demands on synchronization and/or repeatability of positioning.

### Drive Control

We offer the rotary table EZ-0675 with the following drive controllers:

- Kollmorgen AKD P00606
- Kollmorgen Servostar S300 / S700
- ACS Controller



## Specifications

Type	Unit	EZ-0675	EZ-0675 HT
Turning Range	°	> 360 (unlimited)	> 360 (unlimited)
Error Motion axial (in the center)	µm	< 0.2	< 0.2
Error Motion radial (at 20 mm height)	µm	< 0.2	< 0.2
Runout Axial (along Ø 75 mm)	µm	1	1
Max. Speed 1)	rpm	1000	1000
Mechanical Data	Unit	EZ-0675	EZ-0675 HT
Mounting Position		unrestricted	unrestricted
Length x Width x Height	mm	115 x 115 x 49	115 x 115 x 60
Moving Mass (rotor)	kg	0.4	0.4
Total Mass	kg	2.1	2.1
Nominal Load Capacity axial push/pull	N	160 / 40	160 / 40
Max. Load Capacity radial	N	60	60
Nominal Load Capacity radial	N	45	45
Max. Moment of Tilt	Nm	6	6
Inertial Moment	kg*m <sup>2</sup>	0.001	0.001
Material		aluminium hardcoat/anodized	
Encoder	Unit	EZ-0675	EZ-0675 HT
Type		incremental	
Lines per Revolution		10.000	
Output Signal		1Vpp / RS422 (interpolated)	
Interpolation Options		5-, 10-, 50-, 100-fold	
Drive	Unit	EZ-0675	EZ-0675 HT
Type		synchronous, ironless	synchronous, iron-core
Intermediate Circuit Supply	V <sub>DC</sub>	48	320
Nominal / Peak Torque	Nm	0.3 / 0.6	3.4 / 3.9
Nominal / Peak Current	A <sub>rms</sub>	2 / 4	5.6 / 7.6
Interfaces and Environment	Unit	EZ-0675	EZ-0675 HT
Supply Pressure	bar	5	
Air Consumption	Sl/min	ca. 12	
Cable Length	m	1	
Clean Room Suitability		applicable	
Drive Control		EZ-0675	EZ-0675 HT
Standard		Kollmorgen AKD P00606 /Servostar S300	
High End		ACS Controller	

1) depending on interpolation value

Subject to technical modifications and typographical errors.

Your BeNeLux Distributor

te lintelo systems bv  
photonics. our passion!